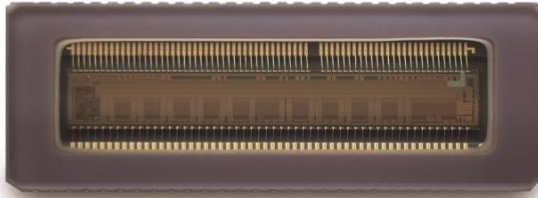


2K/4K C-mount Line Scan CMOS Image Sensor

Preliminary and Confidential



Applications

- Industrial Inspection
- Logistics barcode scanning
- Printing Inspection
- Railway Inspection

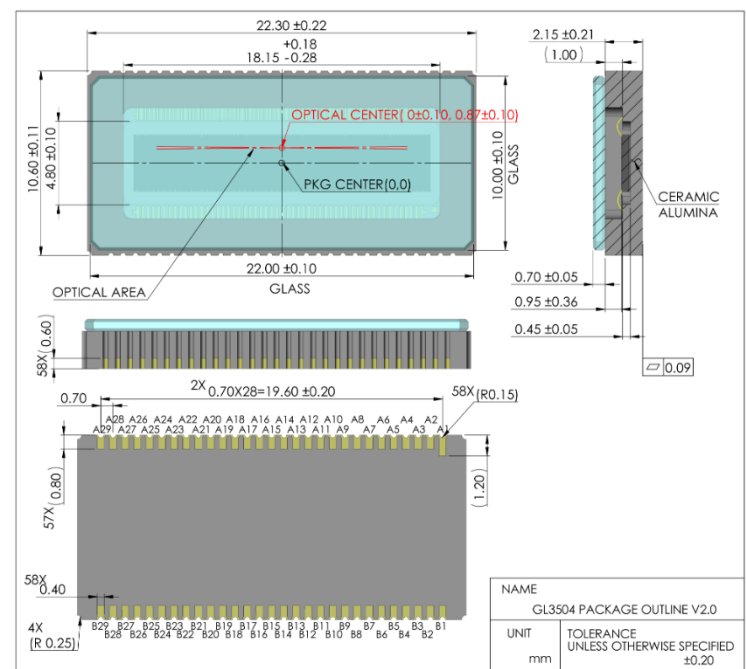
SENSOR DESCRIPTION

GL3504 is a global shutter line scan image sensor consisting of two sets of pixel arrays, one is two lines with 3.5 μm pixels, and the other is four lines with 7 μm pixels. Multiple modes are supported including single/dual lines of 3.5 μm, and single/ triple lines of 7 μm. It reaches a maximum line rate of 172 kHz with 7 μm line in 12 bit single line mode, or up to a maximum line rate of 84 kHz with 3.5 μm line in 12bit single line mode.

GL3504 provides a cost-effective camera solution for inspection applications such as industrial and logistics barcode scanning. The color filter array of the 3.5 μm pixel line is Bayer type, while the 7 μm pixel lines are RGB true color type. Moreover, output channel multiplexing provides more flexibility for users.

GL3504 is assembled with a 58 pin CLCC ceramic package for fast heat dissipation and high robustness.

PACKAGE OUTLINE



SENSOR SPECIFICATIONS

Resolution	4096 (H) × 1(V)	4096 (H) × 2(V)	2048 (H) × 1(V)	2048 (H) × 3(V)
Pixel size	3.5 μm × 3.5 μm	3.5 μm × 3.5 μm	7 μm × 7 μm	7 μm × 7 μm
ADC	12 bit	12 bit	12 bit	8 bit
Full well capacity	12.5 ke-	12.5 ke-	11.5 ke-	12 ke-
Temporal noise	5.5 e-	5.5 e-	5.5 e-	21 e-
Dynamic range	67.5 dB	67.5 dB	66.5 dB	55.2 dB
Max. frame rate	84 kHz	42 kHz	172 kHz	93 kHz
Power consumption	< 0.9 W			< 1.1 W
Interface	Sub LVDS			
Max. Data rate	5.47 Gbps			
Channel multiplexing	6/3/2/1			
Package	58pin CLCC ceramic package			
Chroma	Mono & Color			

Subject to change without notice. Please address all product inquiries to GPIXEL

Email: info@gpixel.com