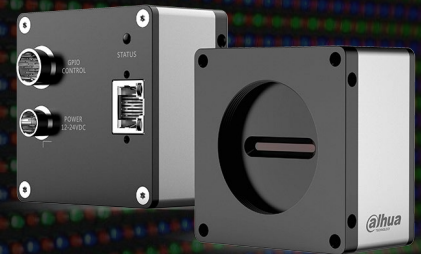


▲ DH-MV-L5082MG170E

- 512MB on-board frame buffer
- Software trigger/External trigger/Free run mode
- Support brightness enhancement, gamma correction, LUT, etc.
- Support flat field correction for multiple user groups
- Support for multiple image data format output, ROI, and Binning
- Conform to GigE Vision protocol and GenICam standard
- Support DC 12-24V wide-range power supply
- Conform to CE, FCC, UL and RoHS certifications



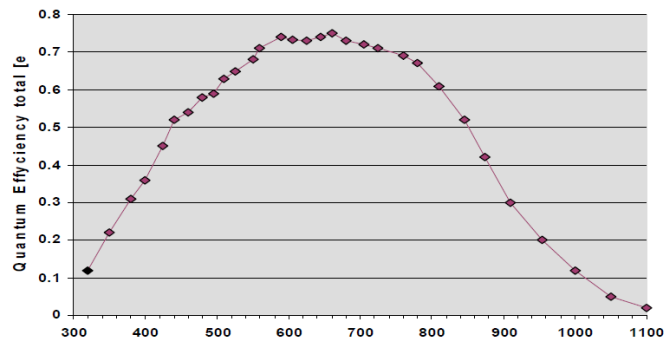
Specification

Model	Sensor	Sensor type	Resolution	Frame rate (fps)	Bit depth	Interface	Mono/Color	Pixel size (μm)
DH-MV-L5082MG170E	CMOSIS	CMOS	8192x1	13K	12	GigE	Mono	7x7

Model	DH-MV-L5082MG170E
SNR	46dB
Dynamic Range	65.9dB
Sensitivity	77 LSB/(nJ/cm ²)
GPIO	6-pin Hirose connector for external power supply; 12-pin Hirose external trigger connector, 2 channels differential/singleEnded input, 2 channels differential/singleEnded output, 1 channel differential/singleEnded is able to configure input/output, and 1 channel for GPIO
Image Format	Mono8/10/10Packed/12/12Packed
Exposure Time	8μS~1S
User Setting	Support two sets of user-defined configurations
Dimensions	80mmx80mmx48mm(not including lens mount and rear case connector)
Weight	390g
Flat field correction	Support calibration results import/export
Power Supply	DC power supply by Hirose connector , with voltage range from 12V to 24V
Power Consumption	≤6W, 12V
Lens Mount	M72*0.75, FBL12.00mm
Temperature	Storage temperature:-30° C~ + 80° C; Operation temperature:-30° C~+50° C

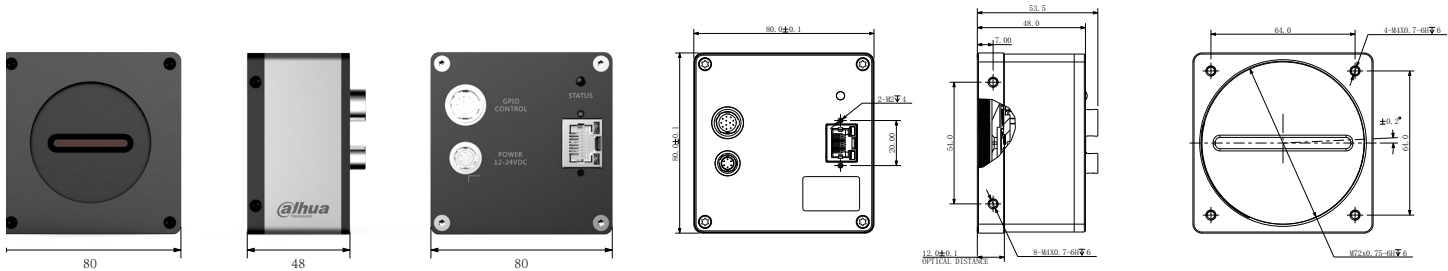
Spectrogram

L5082MG170E

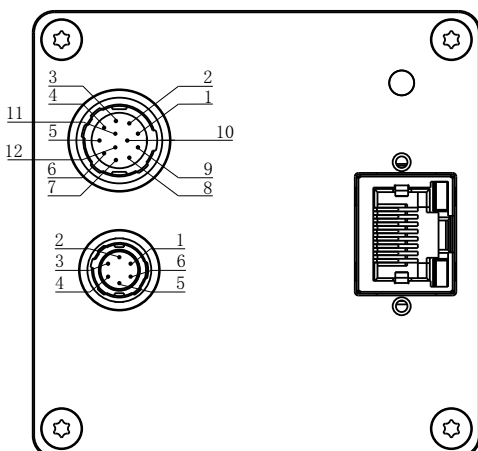


Quantum Efficiency Curve for Mono Sensor

Dimensions



IO Interface Instruction



Pin	Signal	Description
1	Line1_in-	RS422 input-
2	Line1_in+	RS422 input +/singleEnded input
3	Line3_inout-	RS422 input/output-
4	Line3_inout+	RS422 input/output +/singleEnded output/output
5	Signal ground	Ground
6	Line5_out-	RS422 output-
7	Line5_out+	RS422 output +/singleEnded output
8	Line2_in-	RS422 input
9	Line2_in+	RS422 input +/singleEnded input
10	Line4_GPIO	SingleEnded input/output
11	Line6_out-	RS422 output-
12	Line6_out+	RS422 output +/singleEnded output

Pin	Signal	Description
1	Power	DC 12V-24V input
2	Power	DC 12V-24V input
3	--	--
4	--	--
5	GND	Ground
6	GND	Ground