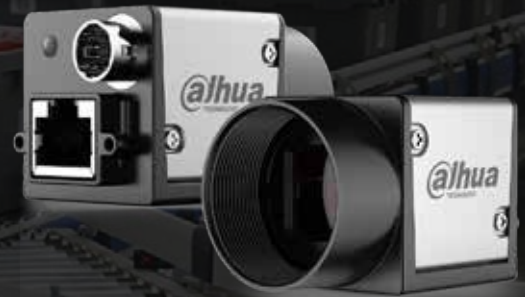


▲ A3B00M/CG000E

- 1Gbps Ethernet interface , max 100m transmission
- 256MB on-board frame buffer
- Support multiple image data formats
- Conform to CE, FCC, RoHS certifications
- Software trigger/Hardware trigger/Free run mode
- Compatible with GigE Vision V2.0 protocol and GenICam standard



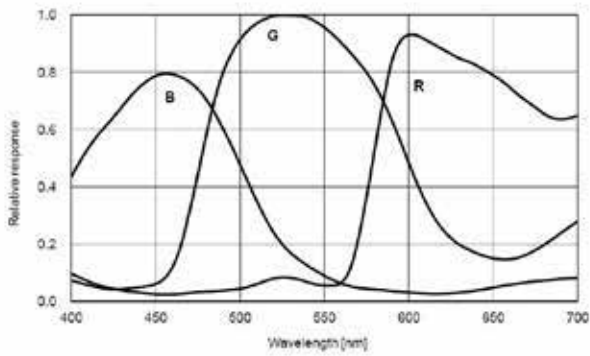
Specification

Model	Sensor	Sensor type	Shutter	Resolution	Frame rate (fps)	Bit depth	Interface	Mono/Color	Pixel size (μ m)	Sensor size
A3B00MG000E	IMX183	CMOS	Rolling	5472x3648	5.8	10	GigE, POE	Mono	2.4x2.4	1"
A3B00CG000E	IMX183	CMOS	Rolling	5472x3648	5.8	10	GigE, POE	Color	2.4x2.4	1"

Model	A3B00MG000E	A3B00CG000E
Effective Pixels	20MP	
SNR	>38dB	
Dynamic Range	66dB	
GPIO	6 pin Hirose: 1 Opto-isolated input, 1 Opto-isolated output	
Image Format	Mono8/10/10Packed	BayerGB8/10/10Packed, YUV422Packed Mono8, BayerRG8/10/10Packed
Binning	Support	--
Gain	0dB~27dB	
Gamma	Range from 0 to 4, support LUT	
Exposure Time	187μs~1s	
Trigger Mode	Software trigger/Hardware trigger/Free run mode	
Image Buffer	256MB on-board buffer	
User Setting	Support two sets of user-defined configurations	
Dimensions	29mmx29mmx42mm(not including lens mount and rear case connector)	
Weight	88g	
Power Supply	POE/DC power supply by Hirose connector, with voltage range from 6V to 26V	
Power Consumption	12V≈3.4W	
Lens Mount	C	
Temperature	Storage temperature:-30° C~ + 80° C; Operation temperature:-30° C~+50° C	

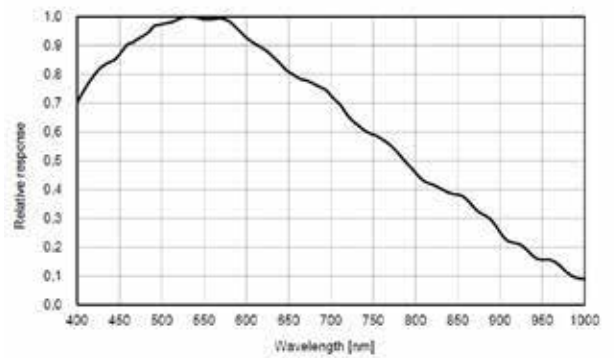
Spectrogram

A3B00CG000E



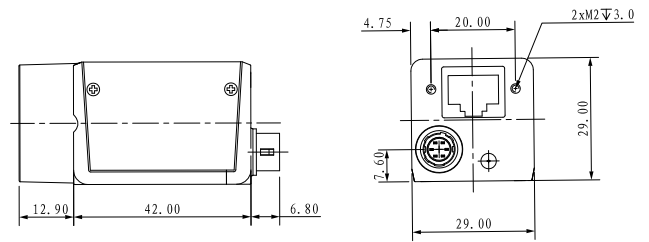
Quantum Efficiency Curve for Mono and Color

A3B00MG000E

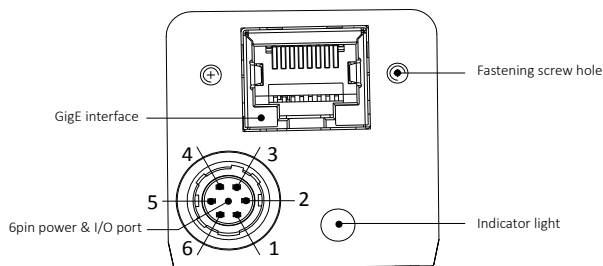


Quantum Efficiency Curve for Mono Sensor

Dimensions



IO Interface Instruction



Pin	Signal	Description
1	Power	DC 6V-24V input
2	Line1	Opto-isolated input
3	Line2	NA
4	Line0	Opto-isolated output
5	IO GND	Opto-isolated ground
6	GND	Power ground